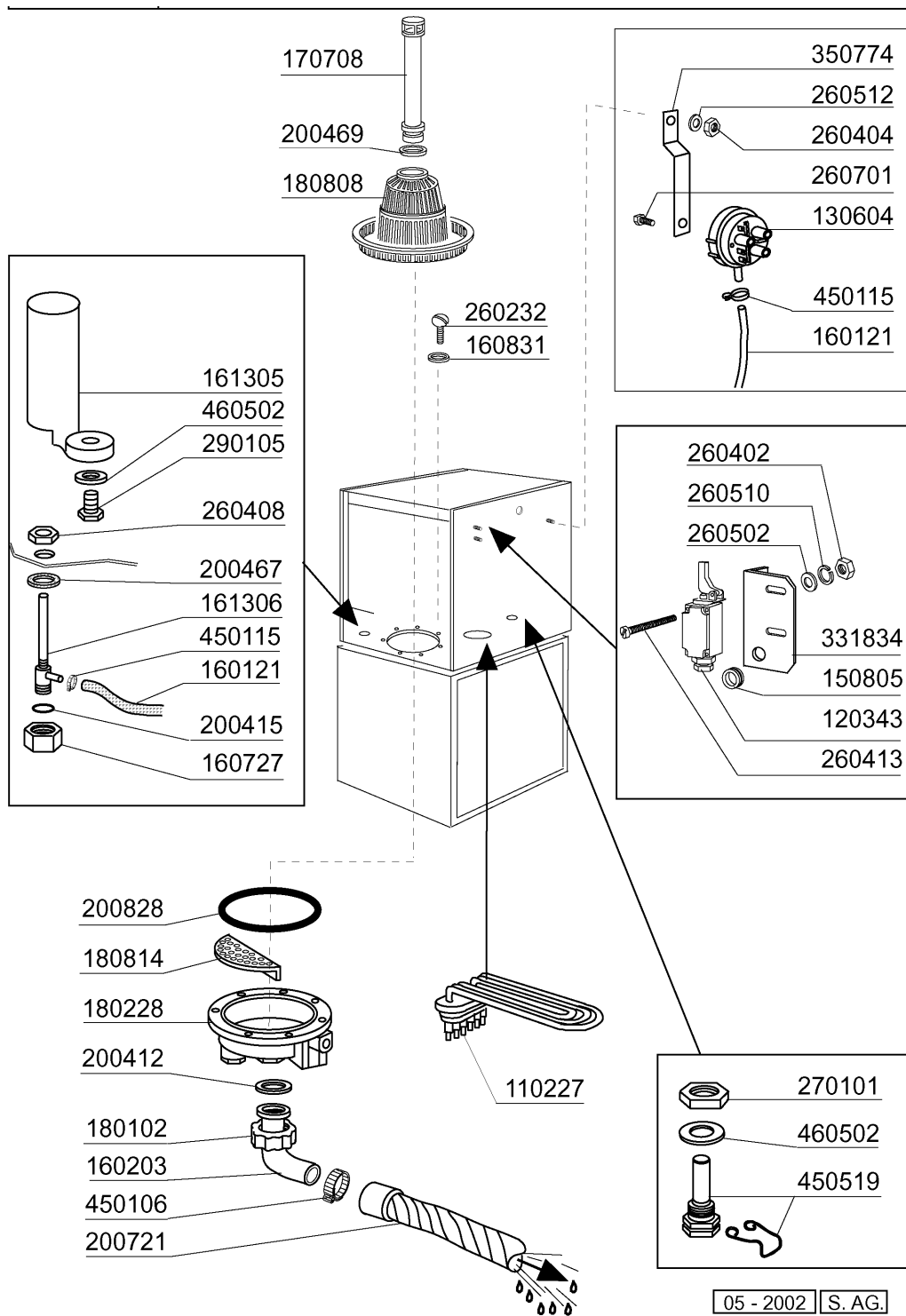


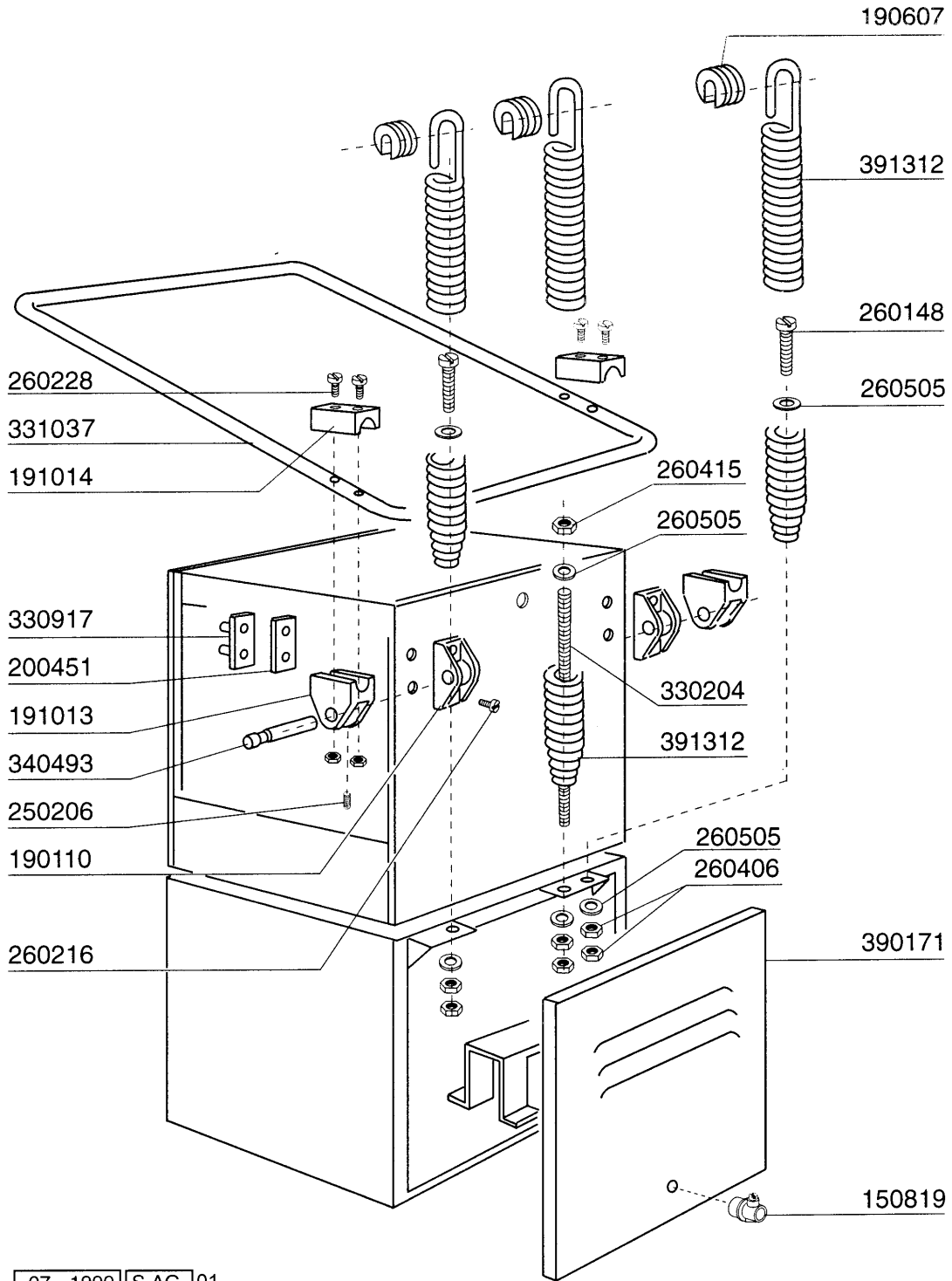
**2 - Hood**

<b>CODE</b>	<b>DESCRIPTION</b>
160509	FOOT SUPPORT
160811	WASHER F2 18X8.5X1 ALGOF
161110	BACK COVER S90-C85-140
180605	RIGHT GUIDE F. DOOR C30-70
180606	LEFT GUIDE F. DOOR C30-70
190637	GUIDE FOR DOOR "C"
190638	ROLLER FOR "C" DOOR GUIDE
200402	SELF-ADHES.RUBB.SPONGE STRIPS
200433	SPONGY RUBBER RECT. 6X2,5 ADHE
210203	RUBBER FOOT 30 MM
260147	SCREW TE 8X12 SPECIAL
260227	M5 X 30 MUSHROOM HEAD SCREW
260248	SPECIAL SCREW TB 5X12
260503	STAINL.STEEL FLAT WASHER D5 UN
320627	FIXING PLATE F.GUIDES C30-70
320927	DOOR C30 C70
321970	GUIDE
331919	SPLASH GUARD FOR C75 (NEW HOOD
350840	PLATE SUPPORT C70-C85-C140
351534	FRONT PANEL



3 - Tank

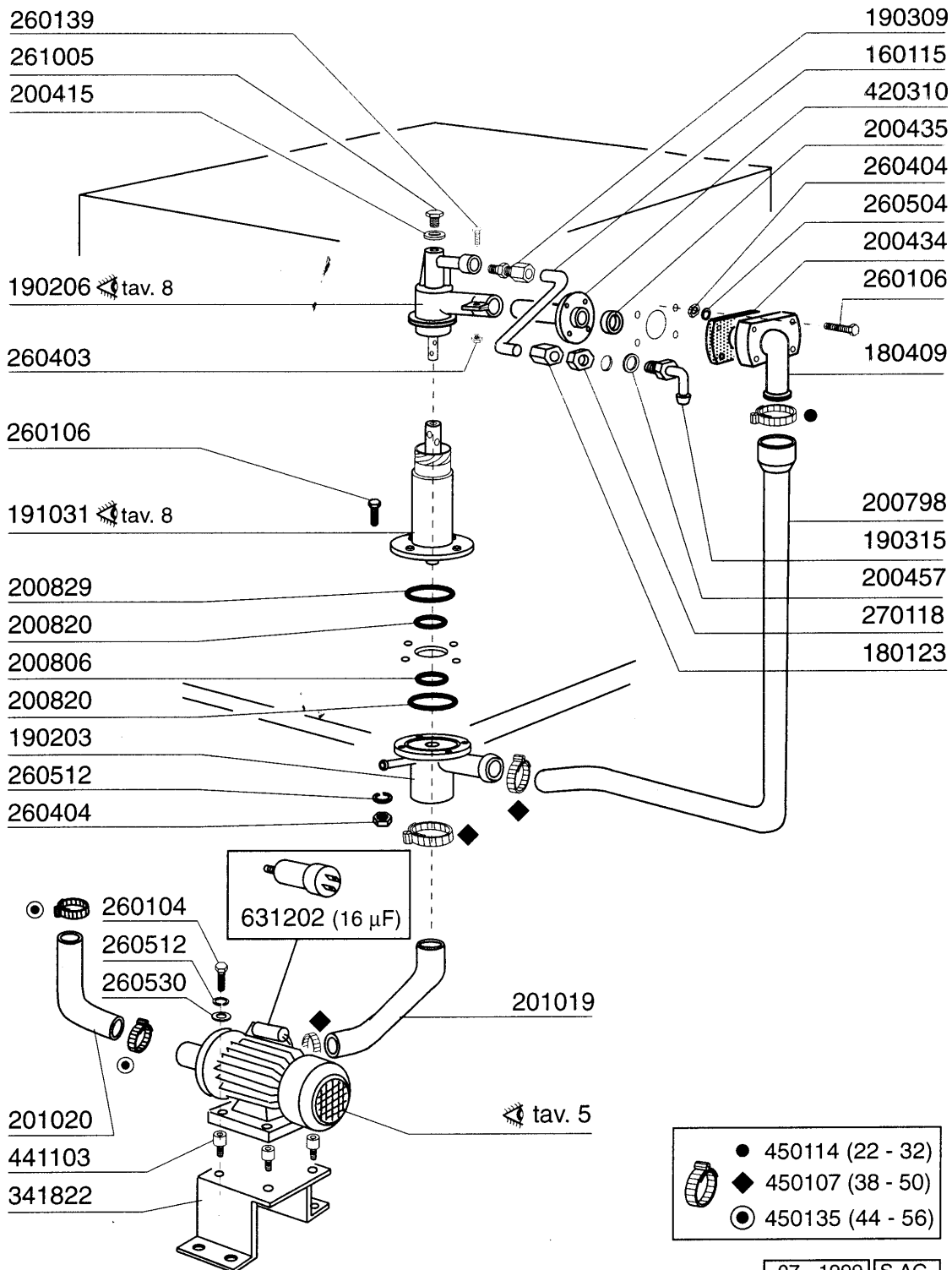
CODE	DESCRIPTION
110227	HEAT. ELEMENT 3000W 230/400V
120343	MICRO SWITCH (120364)
130604	PRESSURE SWITCH 80-50 1 LEVEL
150805	CABLE HOLDER 18X22X1
160121	HOSE EPDM D. 5 X 9
160203	ELBOW 1"1/2 N-S-F-C /DRAIN
160727	PLUG 1/2 NTP CAP
160831	WASHER F2 17X6X3
161305	AIR CHAMBER F45-F80
161306	HOSE FOR AIR CHAMBER F45-80
170708	OVERFLOW PIPE H 215 X F3 C30-F
180102	DRAIN PIPE NUT 1"1/2 F45-55
180228	TANK SUCTION BASIN WITHOU.PRES
180808	STRAINER F2-45-55-80
180814	PROTECT.FILTER OF INLET PUMPE
200412	GASKET DRAIN 11/2" 45X33X3
200415	AIR TRAP GASKET -F2 18,5X10X3
200467	DUTRAL GASKET F. AIR TRAP
200469	STAND PIPE O RING 45X35,5X7
200721	DRAIN HOSE 28X35 2MT.
200828	O-RING 183,75X190,81X3,53
260232	STAINL.ST TB SCREW 6X25 B15-6-
260402	STAINLESS STEEL NUT D4 UNI 55
260404	STAINLESS STEEL NUTS D6 UNI 55
260408	S/S NUTS D.12
260413	STAINLESS STEEL NUTS D5 SPEC.
260502	S/S FLAT WASHER D.4
260510	GROWER WASHER D.4
260512	ST/ST GROWER WASHER D6
260701	SCREW 3,5X9,5
270101	HEXAGON LOCK NUT 1/2"
290105	BRASS-TE-PLUG 1/2"
331834	BRACKET FOR MICRO SWITCH C70-7
350774	BRACKET
450106	CLAMP FE ZN 32-44 H=12,2
450115	ELASTIC CLAMP D.8,3/7,8
450519	TANK THERMOSTAT SHIELD C-F
460502	GASKET 30X21X2



07 - 1999 S.A.G. 01

**4 - Handle**

<b>CODE</b>	<b>DESCRIPTION</b>
150819	CABLE HOLDER PG16 WITH HOLE
190110	SUPPORT HANDLE C30 BLACK
190607	HANDLE BUSH C30-70
191013	HINGE F. SUPPORT C30-C70
191014	FLANGE F. HANDLE C30-70
200451	GASKET COUNTERFL.C30 30X100X3
250206	GRUB SCREW D.6
260148	SCREW TE 8X130
260216	SCREW TCP 6X20
260228	STAINL.ST SPECIAL SCREW 6X42 3
260406	NUT 8MA
260415	STAINLESS STEEL SELF-LOCKING N
260505	STAINL.STEEL FLAT WASHER D8
330204	SPRING HOOK C95/155-LC380
330917	COUNTER FLANGE F.HANDLE SUPP.C
331037	HANDLE C95-155-165 ISOLATED
340493	PIN F. HINGE C30
390171	LOWER BACK PANEL LP360-C75BT
391312	SPRING HANDLE C30-C70



07 - 1999 S.A.G.

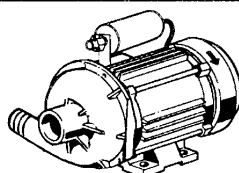
## 5 - Wash

CODE	DESCRIPTION
160115	PL.TUBE.D.9.5 B41 (3/8) C30-
180123	CONNECTION NUT / RINSE 5/8 C30
180409	UPPER CONNECTOR F. WASHING C30
190203	LOWER TEE WASH-RINSE F2-45-55-
190206	UPPER WASH-RIN ARM SUPPORT C30
190309	CONNECTION STRAIGHT 3/8"B41C30
190315	ELL RINSE C30-70
191031	LOWER WASH ARM SUPPORT C30-F80
200415	AIR TRAP GASKET -F2 18,5X10X3
200434	GASKET CONNECTION C30 R50
200435	GASKET WASH.F2 D.40 C30-70
200457	GASKET D.24X16X3 NEOPRENE
200798	CONNECTION HOSE FOR C75
200806	O-RING 2,62X13,10X18,34
200820	O-RING151 46,99X5,33X57,6
200829	O-RING 81,92X92,58X5,33
201019	OUTLET HOSE C70/75 BT
201020	WASH PUMP INLET HOSE C70/75 BT
260104	STAINL.ST TE-SCREW A2 6X16 UNI
260106	SCREW TE 6X25
260139	SCREW TE 5X16
260403	NUTS D.5
260404	STAINLESS STEEL NUTS D6 UNI 55
260504	ST/ST FLAT WASHER D6
260512	ST/ST GROWER WASHER D6
260530	STAINL.ST WASHER 7X22X2
261005	SCREW F. TEE UP.WASH F2-B41
270118	NUTS FOR ELBOW 5/8 C30-70
341822	PUMP SUPPORT C75BT
420310	LOW./UPP.WASH PIPE C30 - 70
441103	PUMP FEET
450107	CLAMP FE ZN 38-50 H=12,2
450114	CLAMP FE ZN.22-32 H=12,2
450135	CLAMP FE ZN. 44-56 H=12,2
631202	CONDENSER 16 MF 450V



POMPA LAVAGGIO - POMPE LAVAGE  
 WASH PUMP - WASCHPUMP - BOMBA LAVADO  
 Kw 0,75

100727 (230 V 50 Hz)  
 HP 1 - Kw 0,75 (FM 4023)



630241

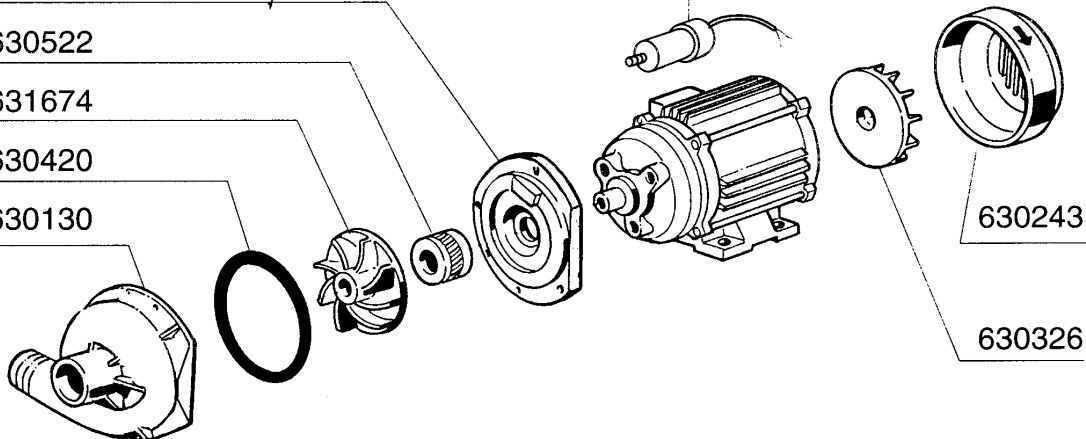
630522

631674

630420

630130

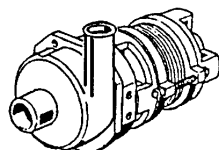
631202 (16 µF)



630243

630326

POMPA AUMENTO PRESSIONE - AUGMENTATION PRESS. EAU  
 RINSE BOOSTER PUMP - DRUCKSTEIGERUNGSPUMPE - BOMBA AUMENTO PRESION  
 Kw 0,073

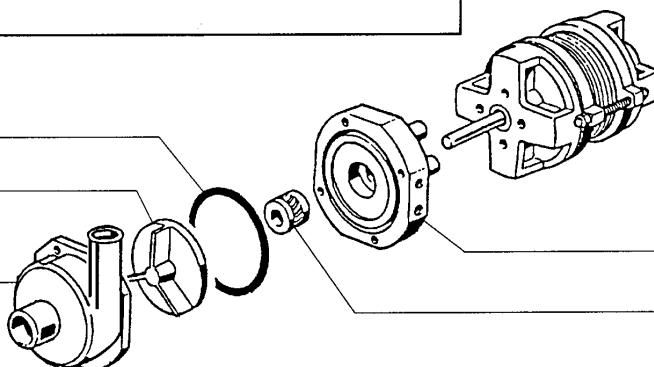


100747 (220/240 V 50 Hz)

630416

631640 (50 Hz)

630131

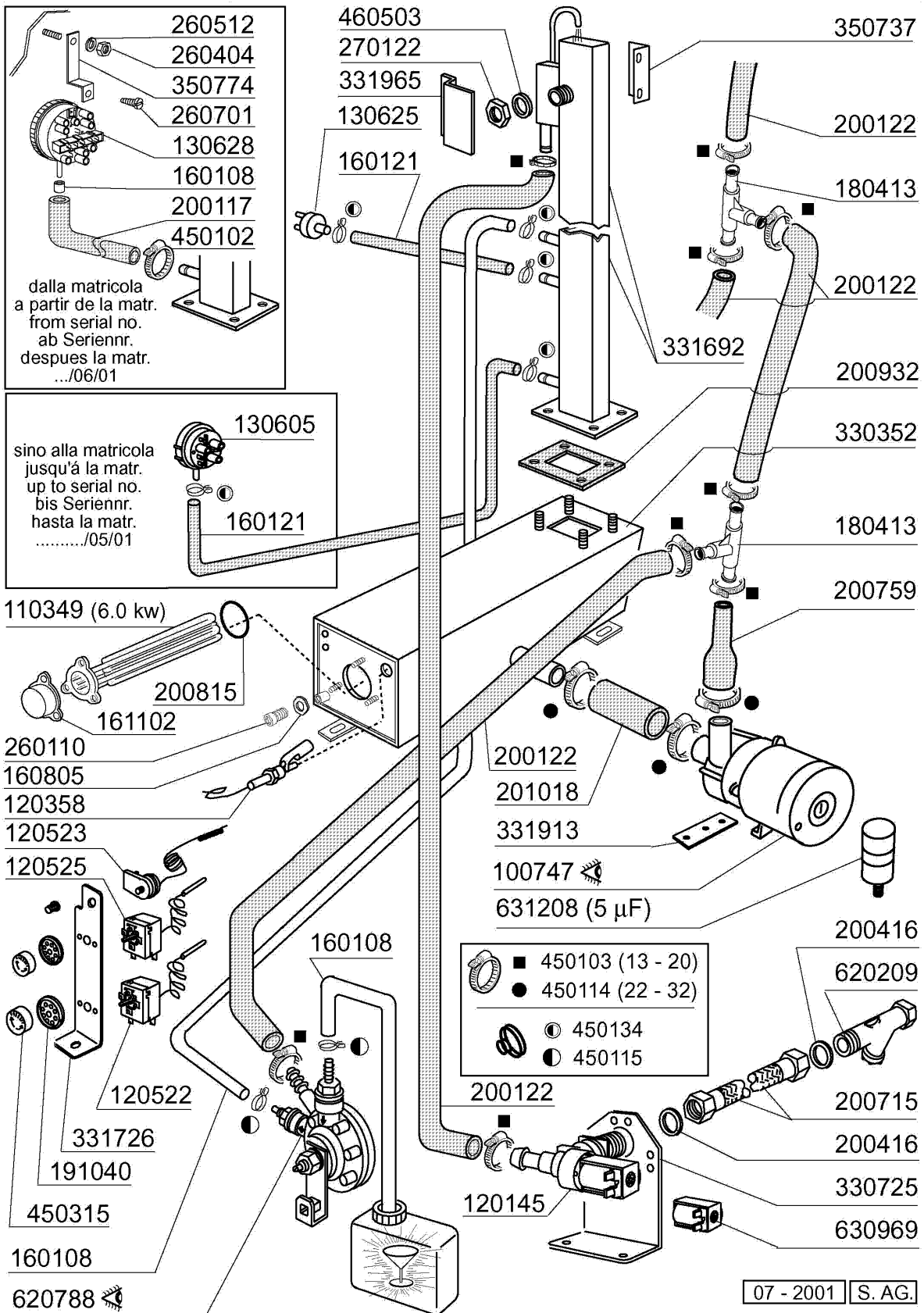


630242

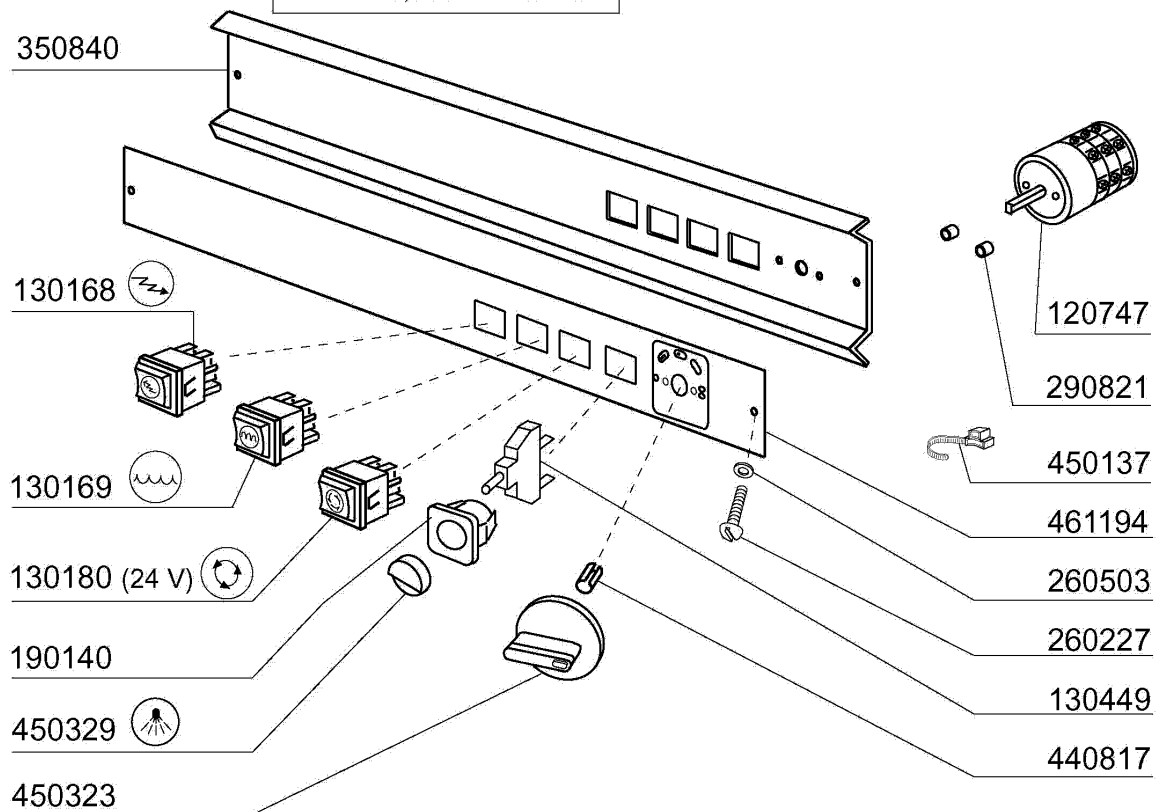
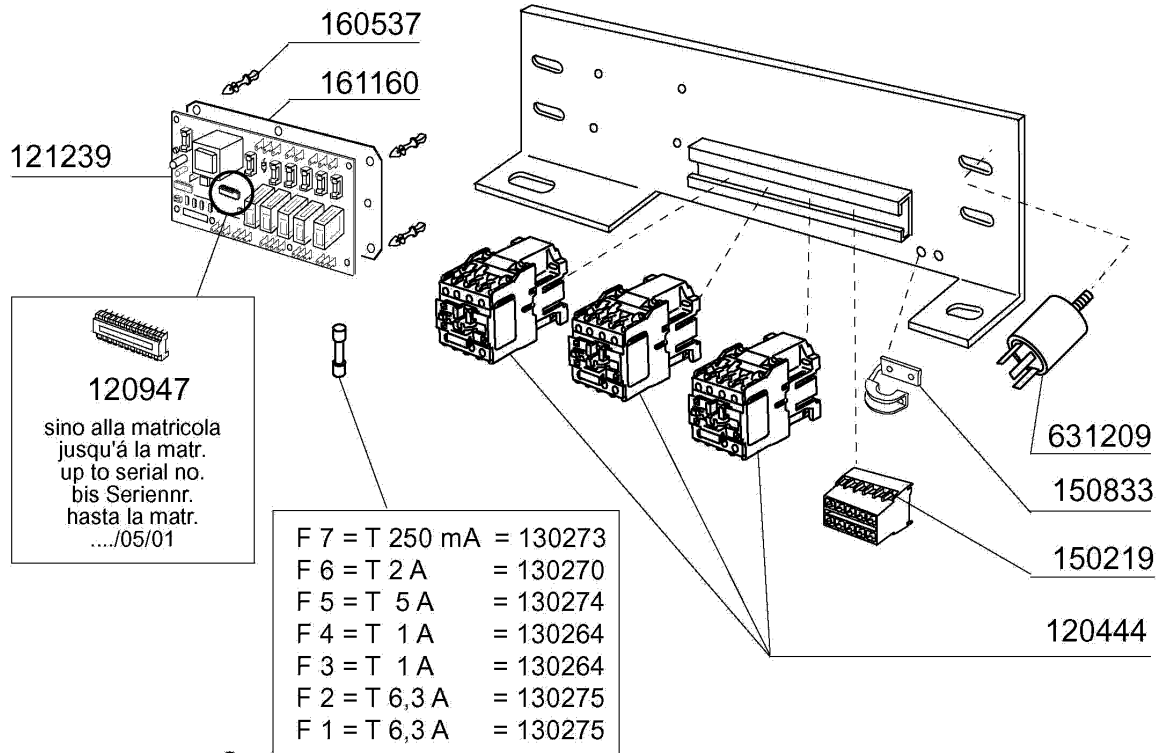
630514

**6 - Pump**

<b>CODE</b>	<b>DESCRIPTION</b>
100727	PUMP 1HP 220/240/1 50HZ LGB
100747	PUMP KW 0,073 220/240-50 4208
630130	VOLUTE PUMP 1HP LGB
630131	VOLUTE PUMP FIR T.4208
630241	PUMP FLANGE 1HP LGB
630242	BACKPLATE FIR T.4208
630243	PLASTIC FAN HOUSING LGB1HP
630326	COOLING FAN F.PUMP LGB1HP
630416	OR FOR VOLUTE 0,12/0,3
630420	PUMP GASKET 1HP LGB
630514	PUMP SEAL FIR4208
630522	PUMP SEAL 1HP LGB
631202	CONDENSER 16 MF 450V
631640	IMPELLER HP0,20/2212-8/5HZ
631674	PUMP IMPELLER 1HP LGB



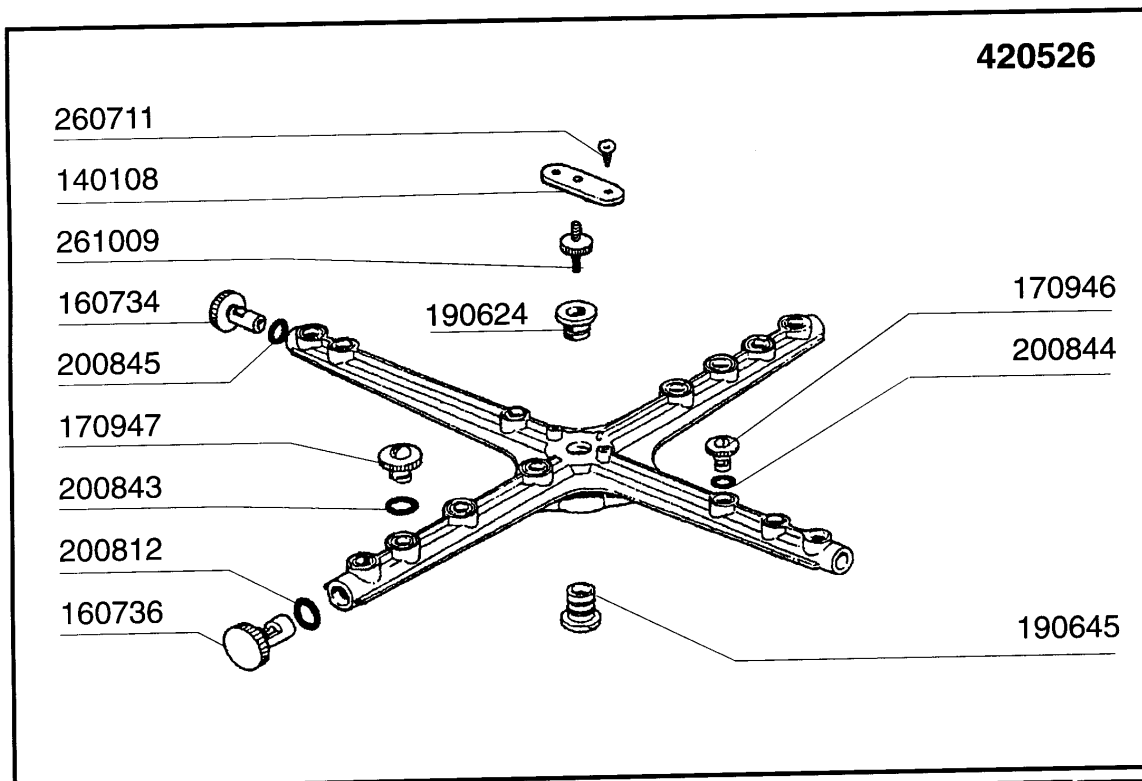
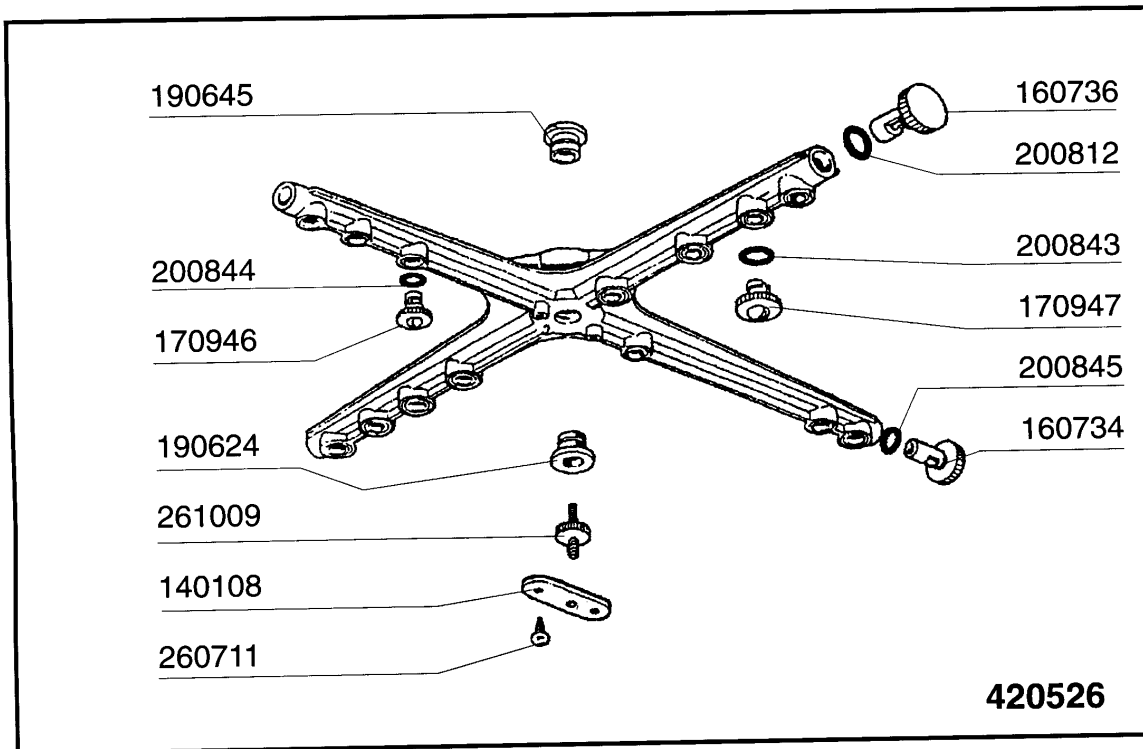
CODE	DESCRIPTION
100747	PUMP KW 0,073 220/240-50 4208
110349	HEAT.ELEMENT 6000W 230/400V
120145	SOLENOID VALVE 12 LT 1 WAY
120358	FLOATING MAGN.SWITCH
120522	TANK THERMOSTAT 90Ø
120523	SAFETY THERMOSTAT 110Ø
120525	BOOSTER THERMOSTAT 2 TEMPERAT.
130605	PRESSURE SWITCH 50-30 1 LEVEL
130625	PRESSURE SWITCH
130628	PRESSURE SWITCH
160108	INJECT.INLET HOSE D.8X5
160121	HOSE EPDM D. 5 X 9
160805	GASKET D.8
161102	ELEMENT COVER MOPL.
180413	TEE NIPPLE D.11,5 - RINSE ASSE
191040	FRAME F.THERMOSTAT KNOB
200117	RUBBER HOSE 7X16
200122	HOSE 11X19
200416	GASKET D. 3/4"
200715	HOSE WATER INLET 2M STAINL.ST
200759	DELIVERY HOSE FOR ECORINSE AC-
200815	O-RING F. HEAT.ELEM.
200932	BOILER GASKET
201018	HOSE
260110	SCREW TE 8X10
260404	STAINLESS STEEL NUTS D6 UNI 55
260512	ST/ST GROWER WASHER D6
260701	SCREW 3,5X9,5
270122	NUTS D.3/4" FOR BREAK TANK
330352	BOILER FOR BREAK TANK
330725	STANDARD BRACKET F.SOLEN.VALV
331692	BREAK TANK "C-LC"
331726	BRACKET FOR 3 THERMOSTATS
331913	BRACKET
331965	BRACKET
350737	BRACKET FOR CLOSED THERMOSTATS
350774	BRACKET
450102	CLAMP FE ZN 11-17 H=9
450103	CLAMP FE ZN. 13-20 H=9
450114	CLAMP FE ZN.22-32 H=12,2
450115	ELASTIC CLAMP D.8,3/7,8
450134	ELASTIC HOSE CLIP D.9,3/8,8
450315	KNOB F. THERMOSTAT 90Ø
460503	SEALING WASHER 38X27X2(3/4)
620209	INLET WATER FILTER
620788	RINSE AID INJECTOR H21428
630969	COIL S4216 220/50HZ
631208	CONDENSER 5MF.450V



07 - 2001 S.A.G.

## 8 - Control box

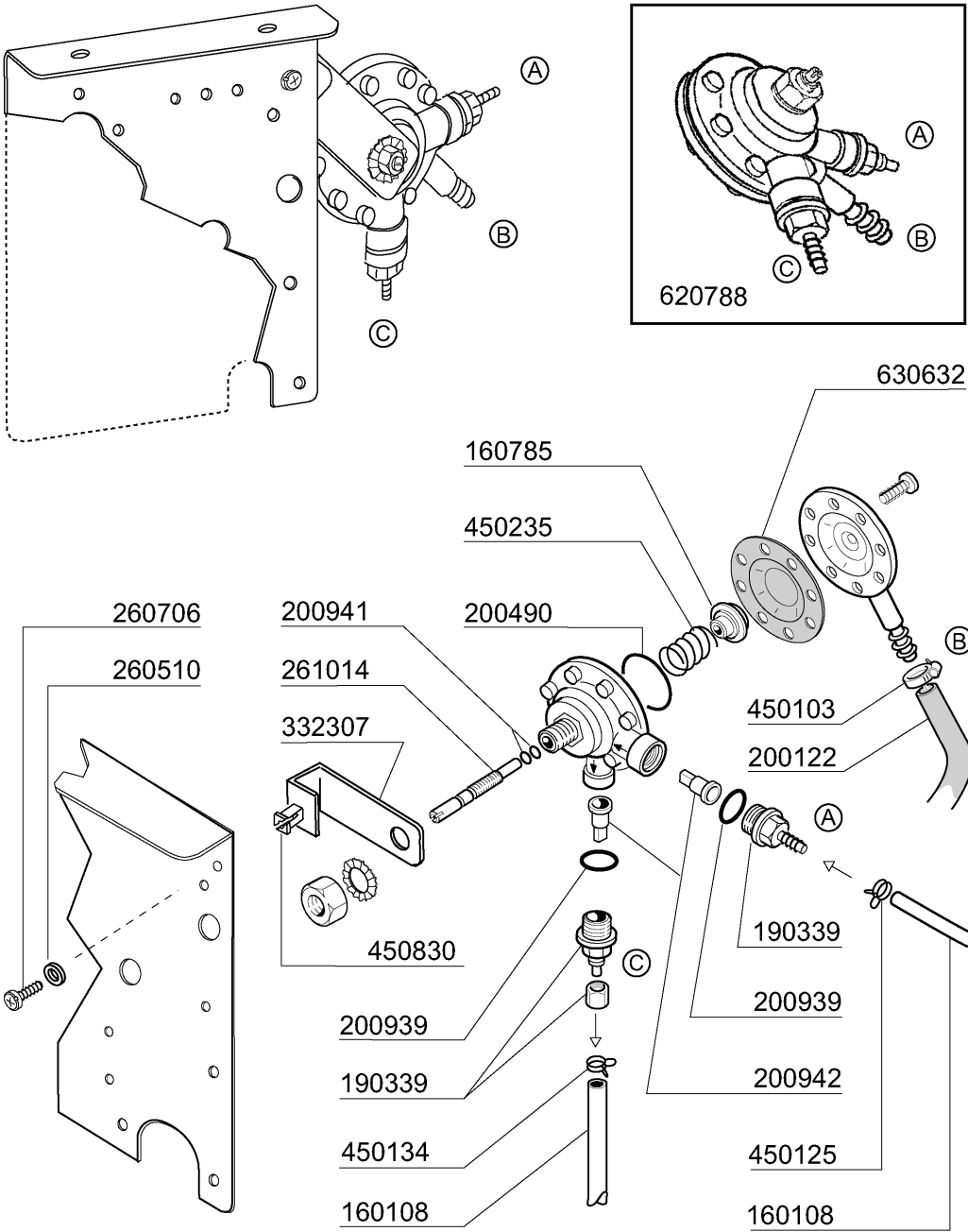
CODE	DESCRIPTION
120444	CONTACTOR 9A 220V 50HZ
120747	SWITCH
120947	EPROM UNICOM BT
121239	ELECTR.TIMER UNICOM FOR BREAK
130168	LAMP MACHINE ON - LAV-LINE
130169	LAMP MACHINE READY (LAV-LINE)
130180	GREEN LIGHT 24V:WORKING MACHIN
130264	FUSE 5X20 1A
130270	FUSE 5X20 2A
130273	FUSE 5X20 250MA GLAS
130274	FUSE 5X20 5A GLAS
130275	FUSE 5X20 6,3A GLAS
130449	PUSH BUTTON BR-BC-FC
150219	TERMINAL BLOCK 5P MMQ165VD26
150833	CABLE HOLDER BC/BR
160537	ELECTRONIC CARD SPACER
161160	PROTECTION ELECT.CARD C/F
190140	BUTTON HOLDER BR-BC-FC
260227	M5 X 30 MUSHROOM HEAD SCREW
260503	STAINL.STEEL FLAT WASHER D5 UN
290821	DISTANCE PIECE FOR SWITCH
350840	PLATE SUPPORT C70-C85-C140
440817	SNAP RING LSCB/1853/17/00
450137	COLLAR CONNECTION WITH BASE 31
450323	KNOB FOR BC-BR-C95-C155
450329	COVER FOR PUSH BUTTON COLD RIN
461194	CONTROL PANEL LP-LC ELECTR.TIM
631209	ANTI-NOISE FILTER



**9 - Wash arm**

<b>CODE</b>	<b>DESCRIPTION</b>
140108	PLATE FOR WASH ARM
160734	END PLUGS RINSE ARM
160736	WASH ARM PLUG F45
170946	RINSE JET/RINSE ARM B-F
170947	WASH JET/WASH ARM F45-80
190624	BUSH FOR PLASTIC ARM F45
190645	LOWER BUSH FOR WASH ARM F
200812	O-RING 1,78X17,17X20,73
200843	O RING 2X13X17
200844	O RING 2X9,5X13,5
200845	O RING 109 2,62X9,13X14,37
260711	SCREW 4,2X13 A2 DIN7972
261009	RETAIN.SCREW FOR WASH-RINSE AR
420526	PLASTIC WASH-RINSE ARM (F45)





07/2008 M.SA

**10 - Rinse aid injector**

<b>CODE</b>	<b>DESCRIPTION</b>
160108	INJECT.INLET HOSE D.8X5
160785	GUIDE FOR SPRING RINSE AID INJ
190339	RINSE AID INJECTOR CONNECTION
200122	HOSE 11X19
200490	PROTECTION GASKET MOD.ADV.
200939	OR GASKET
200941	OR GASKET
200942	VALVE RINSE INJECTOR HVD
260510	GROWER WASHER D.4
260706	SCREW 3,9X13 S/S
261014	SCREW
332307	BRACKET
450103	CLAMP FE ZN. 13-20 H=9
450125	ELASTIC CLAMP D. 10,4X9,8
450134	ELASTIC HOSE CLIP D.9,3/8,8
450235	SPRING RINSE AID INJECTOR
450830	SCREW
620788	RINSE AID INJECTOR H21428
630632	DIAPHRAGM RINSE INJECTOR HVD